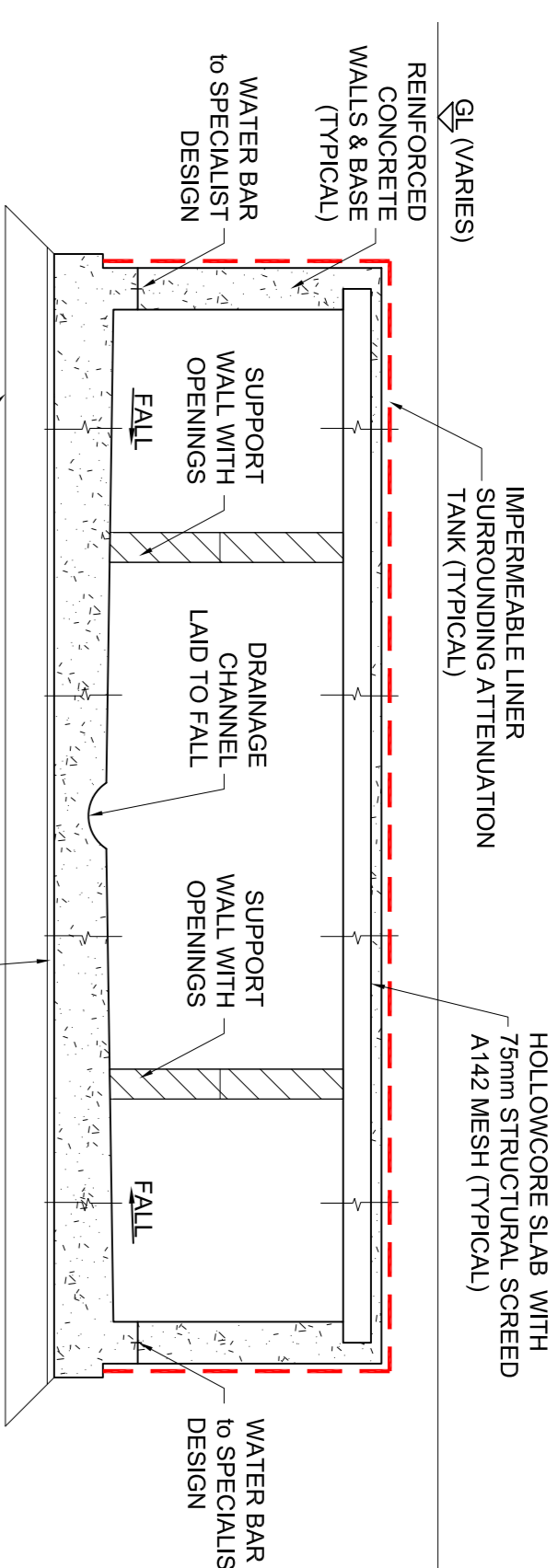
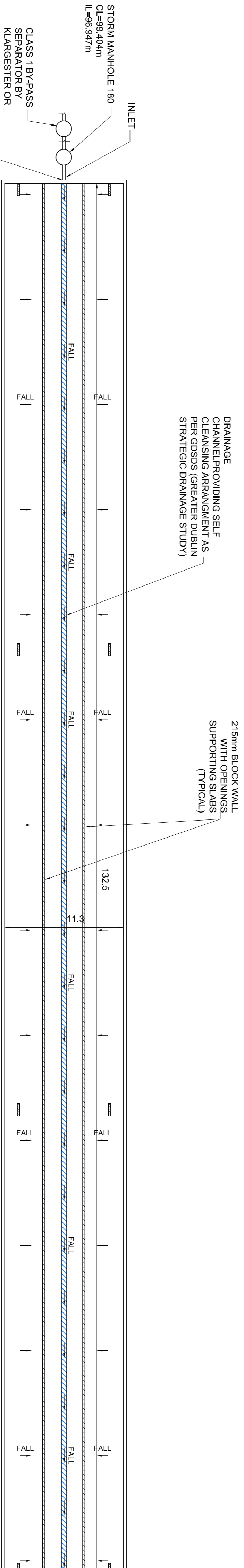


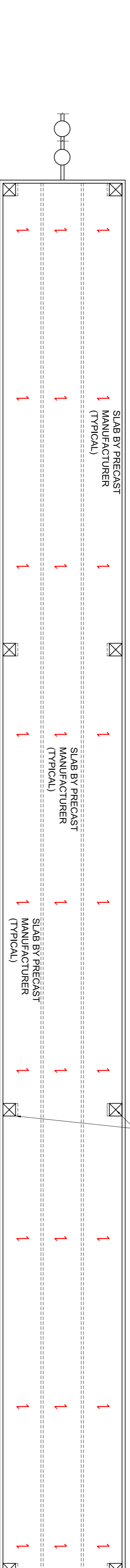
ATTENUATION SYSTEM 3 KEY PLAN
SCALE: 1:750



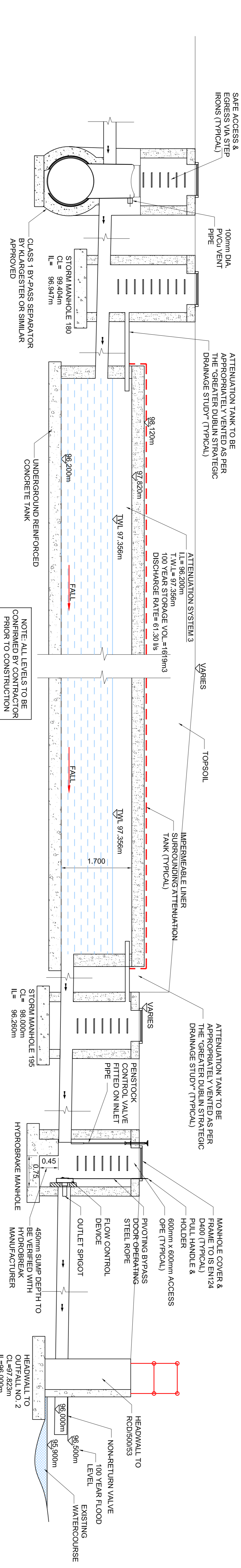
SECTION THROUGH ATTENUATION TANK (TYPICAL)
SCALE: 1:50



ATTENUATION TANK FLOOR PLAN
SCALE: 1:250



ATTENUATION TANK ROOF PLAN
SCALE: 1:250



GENERAL SCHEMATIC OF ATTENUATION SYSTEM 3
SCALE: 1:50

DIMENSIONS

Figured dimensions only to be taken from this drawing. All dimensions to be checked on site.

Architects to be informed immediately of any discrepancies before work proceeds.

NOTES:

1. LOCKABLE MANHOLE COVERS SHALL BE INSTALLED AT EITHER END OF ATTENUATION TANKS AND SHOULD ALLOW FOR SAFE ACCESS AND EGRESS VIA STEP IRONS.
2. IN ORDER TO ISOLATE AND CARRY OUT MAINTENANCE OF THE FLOW MANHOLE, THE OUTLET MANHOLE, ON THE UPSTREAM END OF THE MANHOLE.
3. FOG GRAVITY SYSTEMS, A HYDROBREAK OR SIMILAR APPROVED FLOW CONTROL DEVICE SHALL BE INSTALLED IN THE LAST MANHOLE.
4. THE DESIGN APPROACH OF AN UNDERGROUND TANK SHOULD BE TO MINIMIZE THE NEED FOR ENTRY BY INCLUSION OF SELF-CLEANING ARRANGEMENTS.
5. THE TANKS WILL BE REGARDED AS CONFINED SPACES. WITH ATTENTION TO HEALTH AND SAFETY REQUIREMENTS STRUCTURES WOULD BE DESIGNED TO BE FULLY VENTED AND HAVE MINIMUM HEIGHT FOR SAFE MAN ENTRY.
6. AS WELL AS INSPECTION FOR WATER TIGHTNESS, ALL STRUCTURES INTENDED TO RETAIN WATER FOR LONG PERIODS, SUCH AS SUMPS & TANKS, SHOULD BE SUBJECT TO CONTROL TO MEASURABLE LOSS OF WATER BETWEEN USES FOR EVIDENCE.

© COPYRIGHT

This drawing and any design herein is copyright of JOR Consulting Engineers and must not be reproduced in whole or in part without their express written consent.

REV	DATE	DETAILS
A	07.12.18	ISSUED FOR PLANNING
1	03.12.18	ISSUED FOR PLANNING

JOR Joseph O'Reilly
Consulting Civil & Structural Engineers

Tel: 046 9077092 Fax: 046 9077932
Email: mail@jor.ie Web: www.jor.ie

Unit 11, St. Theresa's Place, Flowerhill, Navan, Co. Meath

ISSUED FOR PLANNING

CLIENT
Rocktetter Limited

PROJECT
Proposed Strategic Housing
Development at Dunshaughlin East

SCALE 1:250 @ A1
DATE Dec 2018
DRAWN BY: SC
CHECKED BY: MS
JOB No. J18-001
DRAWING No. 023
REV A